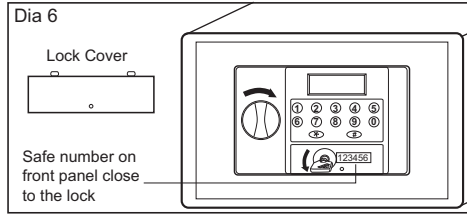
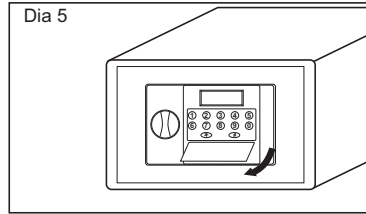


OPENING SAFE WITH OVERRIDE KEY

You can use the manual override key to open the safe and reset your code. DO NOT keep the override key in the safe.

1. To use the key, remove the lock cover on the control panel. Dia 5
 2. Turn key anticlockwise, then the doorknob clockwise, and the door will open. Dia 6.
- Please keep the keys in a secure place, as we do not supply replacement keys, for security reasons.

Please make note of the safe number as this will be needed if a service call is required.



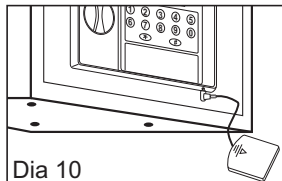
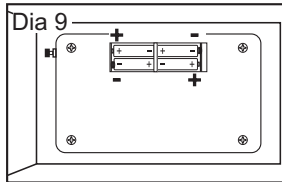
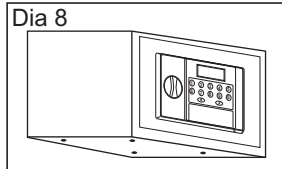
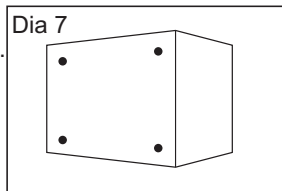
SECURING YOUR SAFE

You may wish to secure your safe to a fixed part of the house. This can be achieved by using the 4 bolts supplied. Insert the bolts through the 4 pre-made holes on the back or bottom of the safe (see Dia 7 & 8).

Note: When fitting the bolts ensure that the nuts are on the inside of the safe.

BATTERY REPLACEMENT

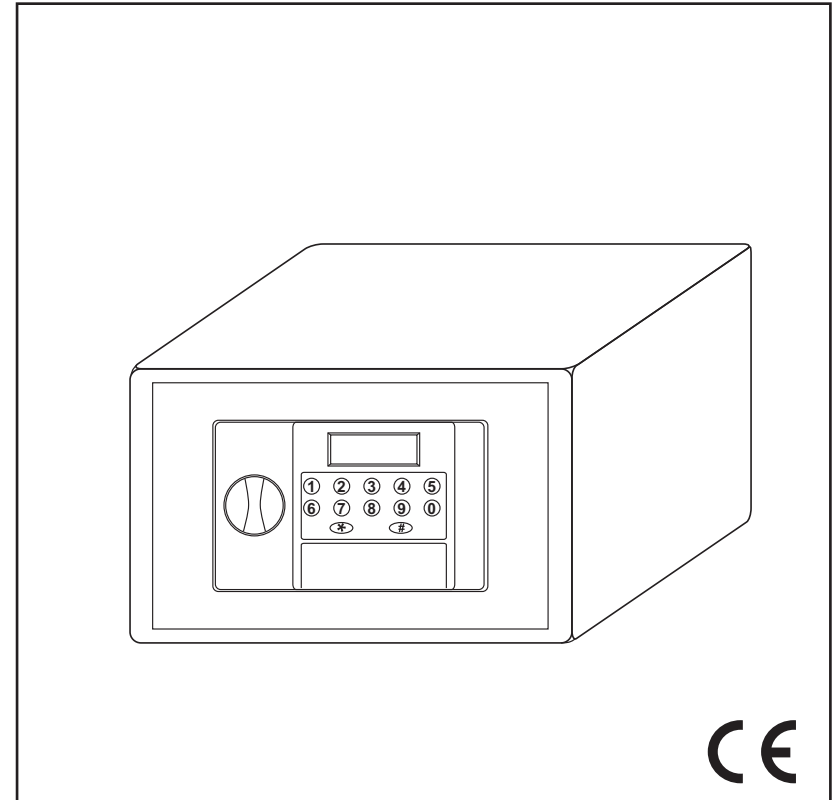
1. The digital safe uses four AA type batteries (supplied). If the voltage of batteries is deficient the LCD will show "LO-BATT" and the batteries must be replaced (see Dia 9). Please look at the environment standards for safe disposal of batteries.
2. In case of dead batteries, either the override key or the backup power supply can be used to open the safe. To use the backup power supply, first fit four 1.5V AA batteries in the box then plug in the battery backup in the socket (see Dia 10).



If faults cannot be remedied, contact the Helpline on 020 83916767
helpline@hilka.co.uk

CHALLENGE

Digital Home Safe with LCD Display 701/7113



Hilka Pro Imports
1 ROEBUCK PLACE, ROEBUCK ROAD, CHESSINGTON, SURREY KT9 1 EU

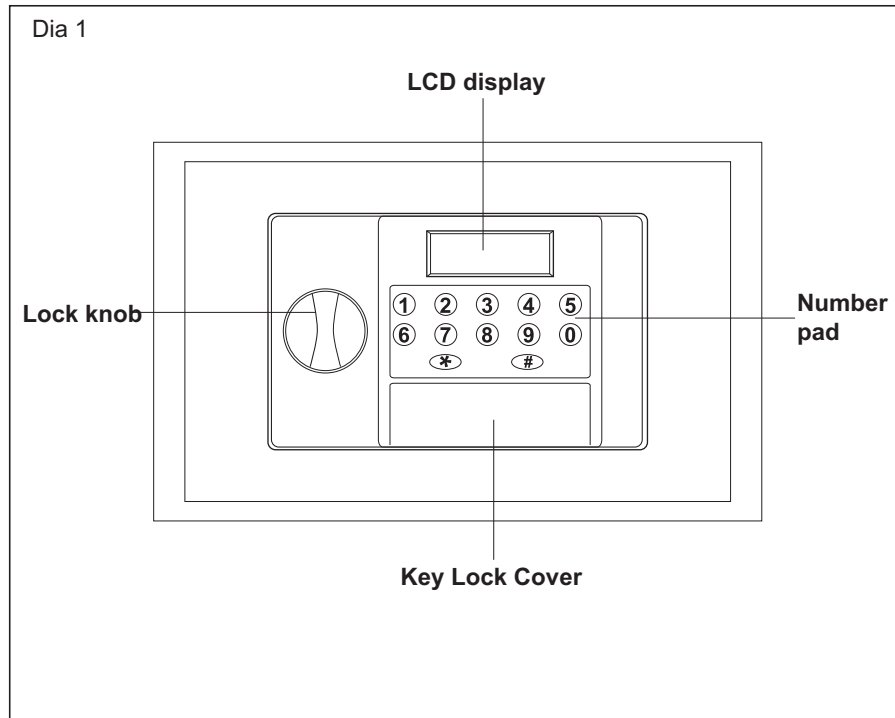
IMPORTANT

Read the instructions thoroughly before using your digital safe.

Keep codes in a safe place. Do not use personal information like birthdays, telephone numbers etc.

Keep keys and backup power supply in a safe place but not in the safe itself!

If the safe is not to be used for a long time, take out the batteries.



SPECIFICATION

SIZE : 350mm(W) X250mm(H) X250mm(D)

NET WEIGHT : 9.5Kgs

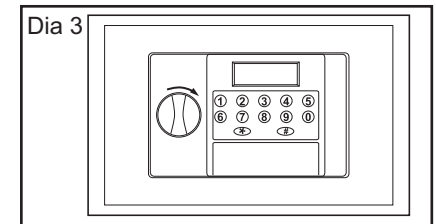
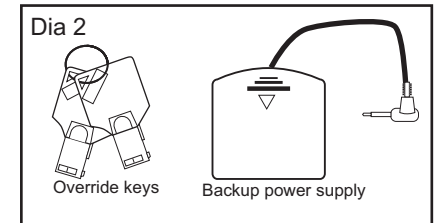
POWER SUPPLY : 4XAA/1.5V Batteries

CONTENTS

- 1 X Backup power supply
- 2 X Manual override keys
- 4 X Fixing bolts
- 1 X Internal mat
- 1 X Instruction book

OPERATING THE SAFE FOR THE FIRST TIME

1. Use the Manual override key to open the safe for the first time, remove the plastic key lock cover (Dia 1). Insert the override key, turn to the left at the same time turn the safe handle to the right and open the safe.
2. Install the 4 X AA type battery's supplied, in the back of the safe door, as shown in Dia 9
3. While the door is open familiarise yourself with the door opening procedure, To open the safe for the first time , press "#" then enter the code "1234" (which is the factory default code) then press "#" again. The safe will beep 3 times and display "OPEN". Then turn the knob clockwise within 10 seconds to open the safe.
4. If the code is entered incorrectly the "LCD" will display "ERROR"
5. Refit the plastic key cover and place the override keys in a safe place (NOT IN THE SAFE) for emergency use.



Note: In addition to the user code, your safe also has a master code "123456" set by the factory. User code can be used as guest-code in the hotel-trade.

SETTING YOUR OWN USER OR MASTER CODE

1. Press "#" then the correct user code or master code then press "#" again. The safe will beep 3 times and display "OPEN".
2. Press "*" within 10 seconds and the LCD will display "-----".
3. Enter the new user or master code and press"#", then the LCD will display "-----" once again, repeat your code and "#", the LCD will display "IN"

Note: The steps above will only change one code (the user or the master) based on the code you entered in step 1. To change the other code simply repeat the the steps above using the other code at step 1.

LCD DISPLAY

1. To hide the LCD display, enter "#" then enter "*" followed by the code. The code will not display on the LCD readout.
2. If a mistake is made when inputting the code press "*", the last digit entered will be deleted.

RESET FUNCTION

The safe can be reset back to the factory default codes by pressing the red button situated on the inside cover of the safe door.(Dia 4).

To gain access to reset button you must first remove the reset button cap.

After pressing the red reset button the display will show "CLEAR" and all codes revert back to the factory default codes.

Please refit reset button cap back for security reasons.

